

Supercharging infrastructure design with AI

Continuum Industries is an UK-based startup founded in 2018.

Our guiding principle is simple:

To give **superpowers** to infrastructure designers by automating the repetitive tasks to let them focus on real engineering

Focus is on applying AI to design linear infrastructure assets -
highly repetitive and rule-based design!



Pipelines



Cables - power & telecoms
Transmission lines



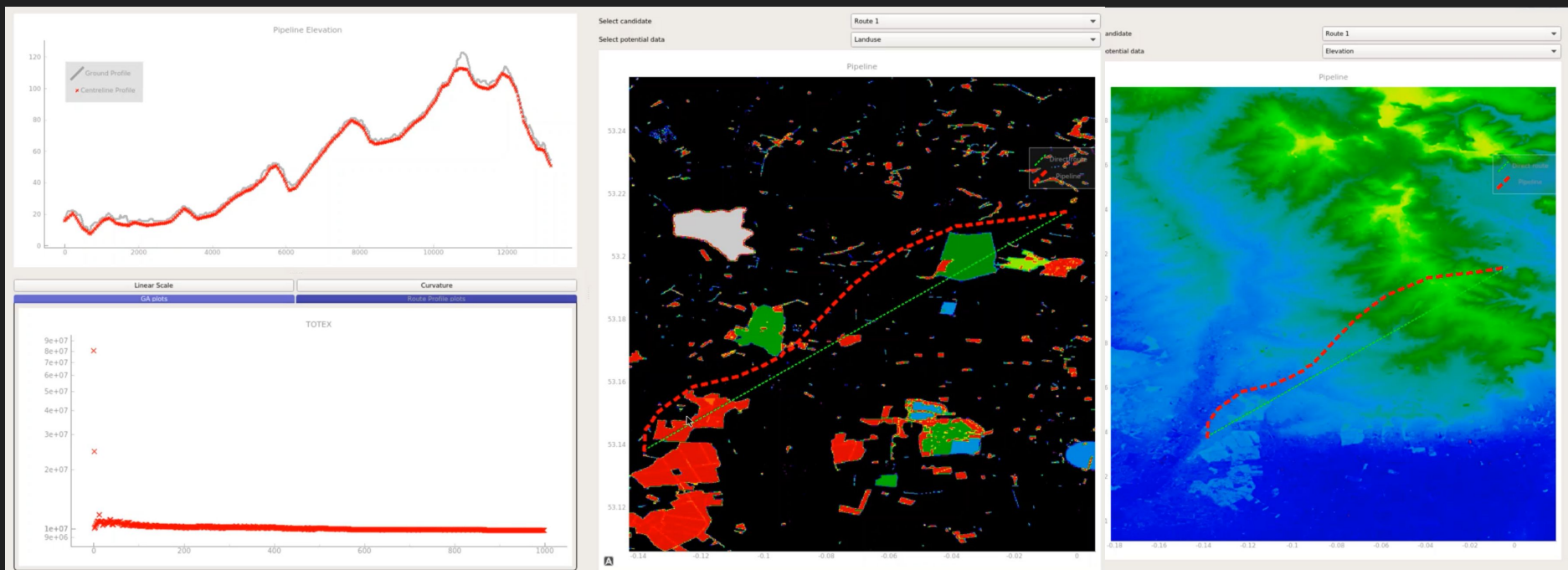
Rail



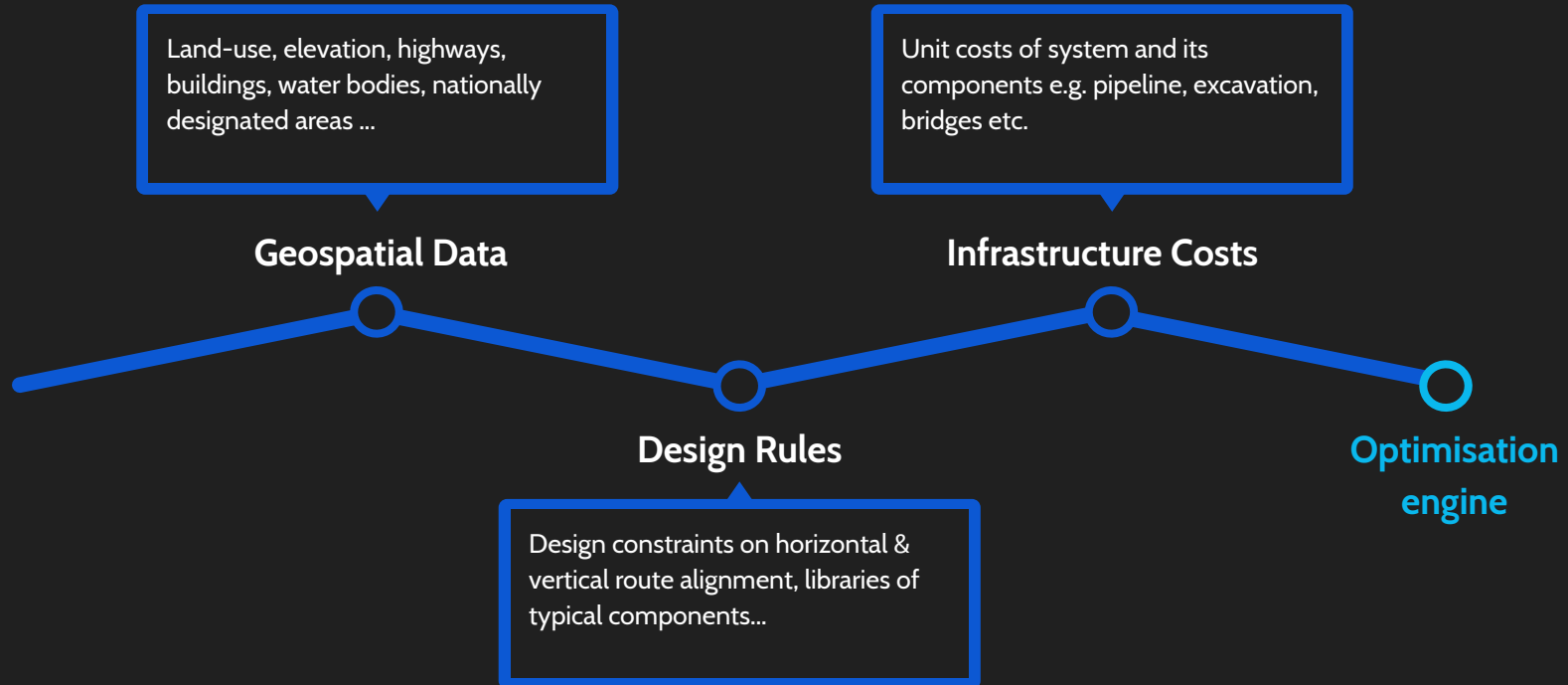
Road

How it looks in practice: Optimising design of a 12 km water pipeline route using AI

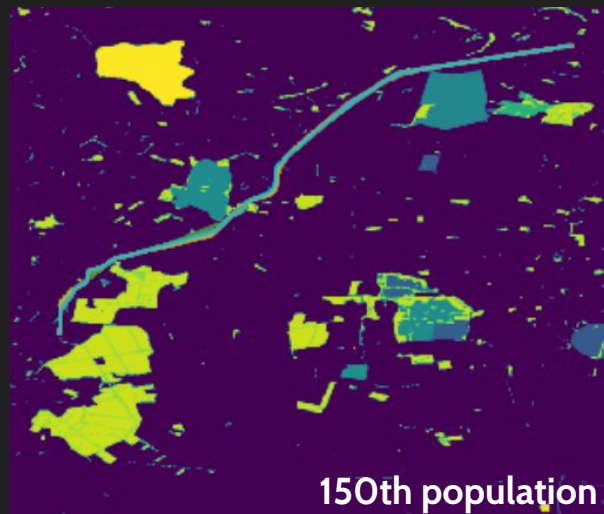
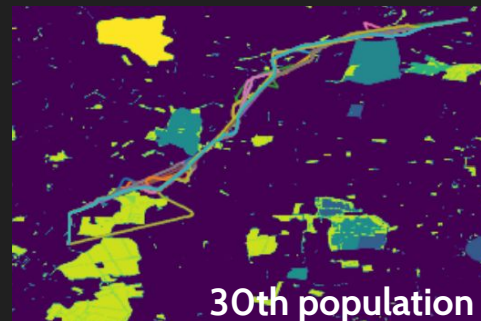
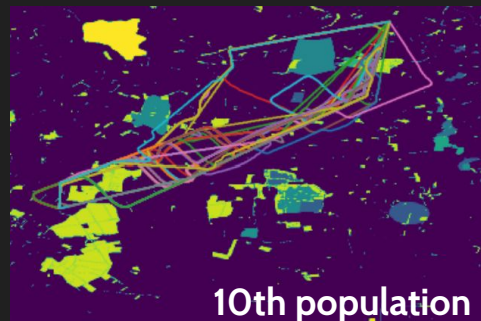
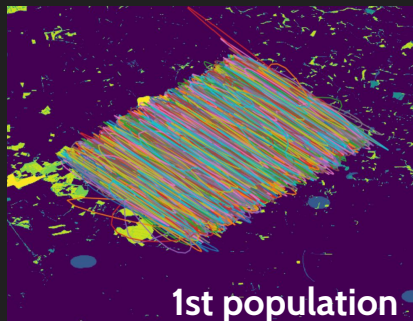
[Link](#) to a demo video



What goes into our AI-driven optimisation engine?



Inside our optimisation engine



Millions of evaluated
3D route options in
less than an hour

What's the value of using AI for infrastructure design?

Capture more
engineering detail



Reduce design
programme length



Explore millions of
design options

→ **Higher confidence, faster decisions & project cost savings**

How to access the optimisation engine?

Currently

API

Keep using your existing GIS tools and control the optimisation engine using a simple API integration.

Services

Tell us what needs to be design and we will run the optimisation for you.

Later in 2020

Standalone web app

In mid-2020 we will release a fully standalone web app to provide an easy access to the optimisation engine.

New features will include:

- Development of custom design rules
- Easy import of custom geospatial data
- Modification and upload of unit cost data
- Multi-objective optimisation

Progress to date

Commercial traction

- Demonstrated a functional product for design of water pipelines and railways.
- Signed a long term partnership with Mott MacDonald and have completed an integration for design of water pipelines.
- Built out a backlog of prospective customers through hundreds of conversations with stakeholders and users.

Company building

- Built a multidisciplinary team of 10 engineers and commercial staff.
- Signed a term sheet to close a seed round of £1.5M of Venture Capital and expand team
- Developed a long-term product development and commercialisation roadmap.

Through the InfraChallenge, we want to widen our platform beyond infrastructure designers and engage directly with governments and infrastructure investors to maximise the potential impact of our technology.